

Storm Resiliency Program

Helping to increase our electric system's resiliency during a major storm



Your consent for important tree work can help prevent power outages!

Please read the information inside to learn more...

What is ground-to-sky clearance?

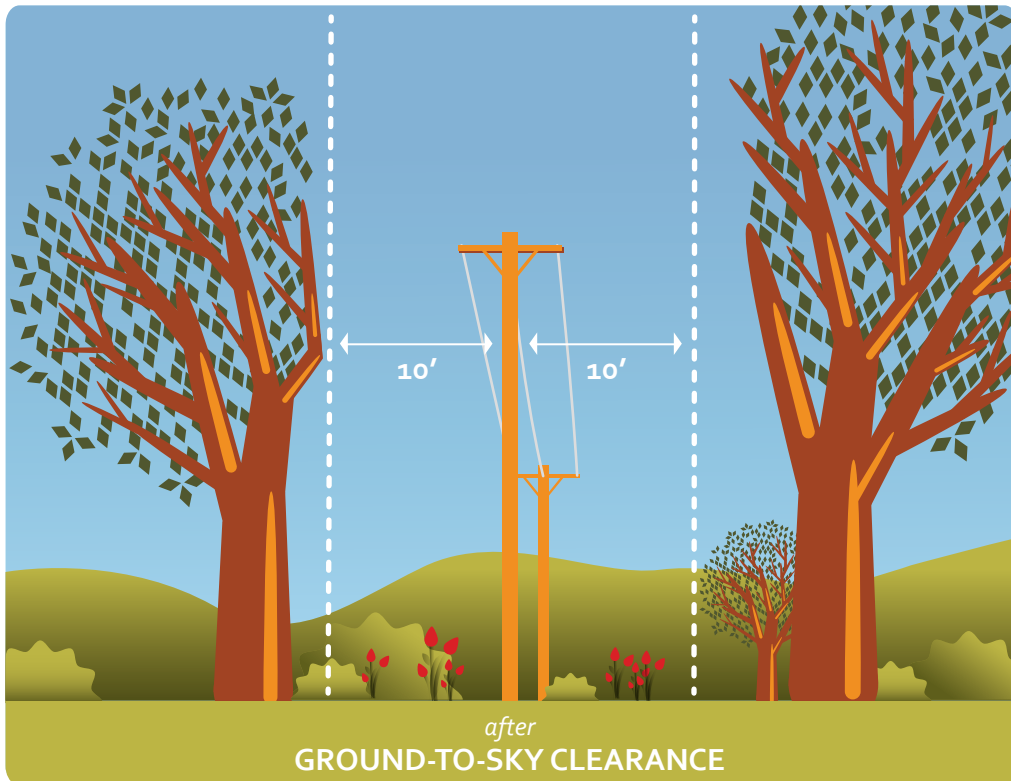
Trees near power lines are the single greatest cause of power outages on any electric system.

In response to requests to improve service reliability from customers and municipalities in your area, Unitil has initiated a storm resiliency pilot program to help prevent power outages caused by trees and nearby vegetation. The intent is to make the electric system more resilient during a major storm event. To accomplish this, we wish to achieve ground-to-sky clearance that would include the removal of trees and branches growing above our electric wires as well as the incompatible trees growing underneath them that could cause future problems.

Who will do the work?

The work will be performed by professional line clearance tree crews as part of our maintenance service.

We appreciate your cooperation!



How do we proceed with tree work?

If tree work is needed on your property or on town land abutting your property, you will be contacted by our representative to discuss the work. Our representative is trained in hazard tree identification and is knowledgeable about the scope of the project. He/She will be seeking your consent to proceed with the necessary tree work.

More information on our website:
www.unitil.com/treepuning

If you have additional questions, please reach us at:
Forestry@unitil.com
1-888-301-7700





MA USRP-7/2014

Right Tree, Right Place

Before you plant that tree or shrub, consider its location. A small tree bought at a nursery can grow to be 40' tall and 40' wide or more. Visit our website for more information about guidelines for planting trees of various mature heights as well as a list of low growing trees that can be safely planted under wires.



When planting,
always remember to Dig Safe.



Unitil

www.unitil.com